

NEW!



**GO BEYOND UNLOCKING DOORS.
UNLOCK YOUR ORGANIZATION'S POTENTIAL.**

CARD IDENTITY SYSTEM SELECTION GUIDE

FARGO[®]
Part of HID Global 

FARGO CARD IDENTITY SYSTEMS PRODUCE THE ID CARDS THAT MAKE ORGANIZATIONS WORLDWIDE MORE PRODUCTIVE.

The end of the lanyard is where the full potential of your ID cards begins.

They've gone beyond simply presenting names and faces. ID cards today, from proximity cards to multifunction smart cards, have exciting capabilities: Financial transactions. Network access control.

Secure records management. Organizations of all sizes are tapping the power of

these card-based applications to help them streamline operations, improve efficiency and tighten security.

More capable cards require a more capable system.

Card-based applications require higher-level ID cards — cards that are more capable, durable and secure. The types of cards that Fargo Card Identity Systems are designed to produce.

Want durable, great-looking smart cards for your campus card program? Build your system around Fargo High Definition Card Printer/Encoders. Want secure, on-the-spot issuance of customer cards anywhere in the country? Fargo Asure ID® Software will make it happen. Need to protect your cards from counterfeiting or tampering? Fargo Visual Security Solutions™ are the ultimate deterrent. Fargo Card Identity Systems bring all these elements together to produce exactly the ID cards your card-based applications require.





Finding your Fargo Card Identity System begins with a simple mouse click.

With so many Fargo printer/encoders, software packages and Visual Security Solutions to choose from, where do you start? Our online Create a System tool gives you a quick and helpful overview of how Fargo system components go together, and what level of security they provide.

Start with expert guidance.

With so many possible configurations, what's the right Fargo Card Identity System for your organization? Ask an authorized Fargo integrator. With more than 140,000 installations around the world, they're the experts on building card identity systems that help make your organization more productive — whether you issue multifunction smart cards, or basic photo IDs.



visit fargo.com/SystemBuilder

to discover which Fargo Card Identity System is right for you.

**MAKE YOUR ID CARDS REFLECT THE PEOPLE WHO WEAR THEM:
SMART, HARD-WORKING, DEPENDABLE AND COMPLETELY AUTHENTIC.**



HDP5000

Produces cards in High Definition for the next generation of ID card-based applications.

- High Definition Printing™ (HDP®), dual- or single-sided, for highest image quality available, even over cards with embedded electronics.
- Increases durability with HDP Film and optional holographic overlaminates applied to one or both sides — simultaneously.
- Supports smart card applications by encoding up to three card technologies, plus mag stripe, in one pass.
- Modular design allows easy add-ons of dual-sided print module, encoding modules, laminator or simultaneous dual-sided laminator.



Non-laminating HDP5000 shown with Fargo Asure ID software



HDP600

Produces high-security smart cards for FIPS 201 and other government and corporate ID applications.

- Dual- or single-sided High Definition Printing (HDP). Prints, encodes and laminates cards with embedded electronics in one pass.
- Supports advanced e-card applications by encoding up to three embedded technologies, plus mag stripe.
- Deters counterfeiting with HDP Film and optional holographic overlaminates.
- HDP600 CR100 prints oversized ID badges for greater event security.



Non-laminating HDP600 shown with Fargo Asure ID software



Visit fargo.com/comparisons
for more information on Fargo printer/encoders.



DTC550

Combines reliable ID card printing with networking capabilities for secure issuance throughout the enterprise.

- Dual- or single-sided Direct-to-Card (DTC®) printing. Dual card hoppers for printing on different card stocks. Optional lamination module (field-upgradeable) increases card security and durability.
- Optional Ethernet port and internal print server for enterprise-class connectivity and card issuance management.
- Ideal for: large corporations, colleges and universities, government, health care and service bureaus.



*Non-laminating DTC550 shown
with Fargo Asure ID software*



DTC400

The unbelievably easy and secure way to print and encode plastic photo ID cards.

- Dual- or single-sided Direct-to-Card printing of photos, bar codes and digital signatures. Field-upgradeable smart card, proximity card (read-only) and magnetic stripe encoding options.
- Eliminates hassles of loading ribbons and cleaning rollers with exclusive SmartLoad™ Ribbon Cartridge.
- Ideal for small- to mid-sized companies, K-12 schools, libraries, recreational facilities and membership cards.



*Single-sided DTC400 shown
with Fargo Asure ID Software*

POWERFUL ID CARD SOFTWARE FOR ORGANIZATIONS THAT ISSUE THOUSANDS OF ID CARDS PER DAY... OR JUST ONE CARD PER DAY.



FARGO ASURE ID EXCHANGE™

Comprehensive ID card design, production and management.

- The perfect photo ID and ID card application control software for organizations wanting intuitive card design, data management and advanced card personalization.
- Powerful integration, enrollment and encoding modules ensure a quick and seamless gateway with other existing database and network applications. Within the Fargo software family, the ability to encode smart cards is exclusive to Fargo Asure ID Exchange.
- **Design • Print • Manage • Share • Control**



FARGO ASURE ID ENTERPRISE™

Photo ID software for issuance over corporate networks.

- Ideal choice for organizations that perform ID card issuance in a networked environment.
- Multiple operators and different departments can easily create, update and maintain multiple shared records in real time.
- Native support for MS Access/SQL databases; ODBC import/export.
- **Design • Print • Manage • Share**





FARGO ASURE ID EXPRESS™

Powerful yet affordable photo ID software.

- Easy-to-use software for designing and producing photo IDs in stand-alone systems.
- Features include conditional design and print rules, batch printing, Live Link™ real-time data exchange, custom reports and password access control.
- **Design • Print • Manage**



FARGO ASURE ID SOLO™

Basic entry-level photo ID software.

- Great for organizations wanting entry-level photo ID software that provides quick and easy single-sided card design and printing.
- Features include card design templates, limited database support, and ability to add a bar code and mag stripe.
- **Design • Print**



PRINT SECURITY MANAGER™

Protects ID card issuance across networks.

- Integrated applications for centralized management of users, devices and materials.
- Keeps networked issuance secure with real-time monitoring of all system components.
- Manages printer configuration and passwords. Logs key events for notification and reporting.



ONE LOOK TELLS COUNTERFEITERS THAT THEY'RE DEFEATED BEFORE THEY EVEN TRY.

HOLOGRAPHIC HDP FILM

High Secure holograms on HDP Film — the ultimate in visual security. Only for Fargo HDP printer/encoders.



Custom High Secure HDP Film: Your unique holographic image, plus Visual Security Elements (VSEs) such as morphing images and micro text, all integrated within HDP Film. Extremely difficult to forge, yet easy to authenticate.



Standard High Secure HDP Film: Fargo's standard Orbit Globe hologram featuring multiple VSEs imaged onto HDP Film. Like the custom film, any attempt to peel apart the layers destroys the image for a tamper-evident solution.

HOLOGRAPHIC OVERLAMINATES

Choose from Secure or High Secure holographic lamination. Only for Fargo HDP or Direct-to-Card lamination modules.



Custom High Secure Overlaminate: Your custom holographic design integrated with a combination of VSEs produces a hard-to-duplicate ID card. Also available in a standard design.



Custom Secure Overlaminate: A cost-effective solution that uses simple, 2D movement of your graphic or text to create a holographic design.



Custom Secure Express™ Overlaminate: The fast track to basic, yet customized holographic protection. Fast delivery. Low minimum order requirements. Supports basic designs and text.



Standard High Secure Overlaminate: Our standard Orbit Globe hologram featuring multiple VSEs. An off-the-shelf solution where incremental security is important.

HOLOGRAPHIC FOIL CARDS

Cost-effective visual security for organizations without card lamination equipment.



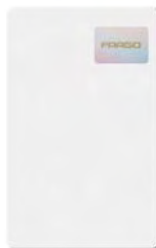
Custom HoloMark™ Card:

Your custom 3D image in a high-resolution hologram that's permanently embedded onto the card surface. Virtually impossible to duplicate, yet easy to validate. Also available in a standard design.



Custom Translucent Foil Card:

A secure hologram of your custom design in a translucent 2D foil embedded just below the card surface for maximum security and durability.



Custom VeriMark™ Card:

Your custom 2D graphic hot stamped in gold onto a silver metallic foil. Visual security with minimum cost and delivery time.



Custom Metallized Foil Card:

Your custom design in a metallized hologram that's layered just below the card surface for maximum durability and resistance to counterfeiting or tampering.



SECUREVAULT™

Guards against theft and misuse of ID card-making materials.

- Unique hardware and software system for protecting an often-overlooked part of card identity systems — materials security.
- Keeps materials under constant surveillance through inventory management software, RFID technology and an electronically locked materials safe.
- Tracks the movement and use of blank cards, printer ribbons, holographic films and other sensitive materials. Provides secure audit trails and asset management.



SecureVault 2000 with workstation (above) and the SecureVault 1000 (right).

**DON'T THINK YOU HAVE TO DO THIS ALONE.
FARGO HAS EXPERTS ALL OVER THE WORLD.**



**FARGO SECURE
INTEGRATORS**

AUTHORIZED FARGO INTEGRATORS

From corporations to schools to government agencies, our integrators put the power of Fargo Card Identity Systems to work.

Authorized Fargo integrators have one critical mission: help you get the most from your Fargo Card Identity System. After installing more than 140,000 systems in over 80 countries, Fargo integrators have the real-world experience to implement anything from high-security access control to charging a cafeteria lunch with a student ID. And Fargo integrators keep up to date with ongoing training from Fargo. So when your security depends on a Fargo Card Identity System, depend first on your authorized Fargo integrator.



**FARGO SECURE
PROFESSIONAL
SERVICES**

FARGO PROFESSIONAL SERVICES

A partnership that helps you successfully implement or upgrade large-scale card identity programs.

Working on a large card identity system can be a complex, time-consuming program — one that requires specialized experience. That's why we support authorized Fargo integrators with our own dedicated team: Fargo Professional Services. These experts offer a proven methodology for optimizing the security and performance of sophisticated and often customized card identity systems. From planning through integration and deployment, Fargo Professional Services works in tandem with your integrator to ensure a successful program.



FARGO ACCESSORIES

Customize and complete your card identity system with digital cameras, photography backdrops and other accessories.

Beyond printer/encoders, software and materials, we offer a variety of accessories specifically selected to work with Fargo Card Identity Systems. Digital cameras are an essential part of any photo ID system, and our USB-connected cameras deliver the sharp, clear images that today's high-quality photo ID cards require. Our backdrops are easy to set up and enhance the appearance of your ID photos. Fargo's entire selection of accessories provides a simple, turnkey way to complete your system.



GET YOUR FREE GUIDE TO DESIGNING ID CARDS.

Learn how to create dynamic, effective and secure ID cards.

Fargo's 28-page Card Design Guide Book shows you how to create IDs that:

- Reflect your brand identity.
- Enhance your physical and logical security.
- Reduce your vulnerability to ID counterfeiting.
- Increase your efficiency and productivity.

Also includes a bonus section: A gallery of ID cards intended to provide a creative spark for your own designs.

Visit fargo.com/FreeGuide to get your free copy of Fargo's ID Card Design Guide.





This data sheet is for informational purposes only. Fargo Electronics makes no warranties, expressed or implied, in this summary. Company and product names and data used in sample output are fictitious. Specifications are subject to change without notice. Asure ID Solo, Asure ID Express, Asure ID Enterprise, Asure ID Exchange are trademarks and Asure ID is a registered trademark of HID Global Corporation. Visual Security Solutions, HoloMark, VeriMark, Secure Express, SmartLoad and High Definition Printing are trademarks, and Fargo, HDP and DTC are registered trademarks of Fargo Electronics, Inc. All other trademarks and registered trademarks are property of their respective companies. This is not an offer of sale.

© 2007, Fargo Electronics, Inc. All rights reserved.

SL1428-REV0705

www.positiveid.com

Headquarters

Phone: +1 (320) 214-7641
Phone: (800) 242-0014
E-mail: sales@positiveid.com

Willmar, MN USA

1604 South 1st Street
Willmar, MN 56201

FAX: +1 (320) 214-7643
E-mail: askme@positiveid.com

